



HEIR

Helpful Executives-In-Reach Program

The Helpful Executives-In-Reach (HEIR) program at Rutgers Business School connects MBA students with senior executives within the professional field they are preparing for. HEIRs are subject matter experts in a particular area or specialization, who are appointed on a rotating basis to provide industry insights and professional advice to MBA students (Full or Part-Time) interested in gaining expertise in that same area.

The HEIR program begins with a guest lecture or panel discussion when an HEIR is appointed. Following this, selected MBA students will participate in group mentoring sessions led by HEIRs.

The HEIR program is a mentoring initiative. HEIRs should, therefore, be contacted for **professional planning advice or industry insights only**, and not contacted for internship or career placement opportunities.

Area: Strategy and Leadership

After delivering a guest lecture in a class focused on this subject, HEIRs will lead group mentoring discussions with selected part-time and full-time MBA students interested in this subject area.

Strategy and Leadership Mentors



[Irv Rothman](#)

President and CEO, HPE Financial Services



[William R. Downey Jr.](#)

Senior Vice President - Business Development
Novvi LLC

Area: Supply Chain Management

Helpful Executives-In-Reach Supply Chain (HEIR-SC) focuses on supply chain topics and offers participants the opportunity to access experts, grow their network, and share their interests and experiences. HEIR-SC is facilitated by the MBA Supply Chain Student Initiative in collaboration with the RBS Office of Mentoring Programs. The mission of the HEIR-SC program is to create a space to facilitate curiosity driven discussion around supply chain topics and grow relationships between current and future supply chain leaders. The program meets once a month, alternating between panel discussions and mentoring circles. MBA students may participate in this program by application and selection only.

Supply Chain Mentors



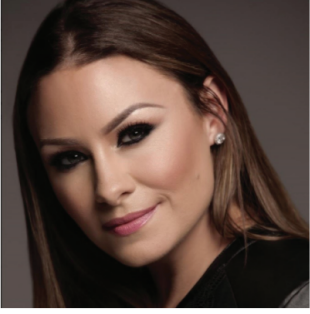
[Dan Biggs](#)

Founder & CEO, Steamchain Corp.



[Michael Dunleavy](#)

Vice President of Global Procurement, Honeywell International (Retired)



[Sheri Hinish](#)

SupplyChainQueen[®] | Sustainability and Supply Chain Executive | IBM Futurist | 2020 & 2019 “Pro to Know”



[Jack Kime](#)

Vice President, Ground Services, CEVA Logistics



[Jill Lavitsky](#)

Vice President, Global Planning and Customer Management, Janssen Supply Chain, Johnson & Johnson



[John O'Hara](#)

Vice President, Strategic Initiatives, Janssen Supply Chain, Johnson & Johnson

[Lucy Bartnick](#)

Supply/Demand Planning Manager, Ansell

[Scott Brown](#)

COO, Steamchain Corp.

[Yuri Crusca](#)

Senior Director

[Lonell Jenkins](#)

Chief Executive Officer, Environmental Design Studio LLC)

[Julie Mitchell](#)

Senior Procurement Agent with The Boeing Company

[Jessica Thompson](#)

Senior Analyst, Colgate-Palmolive Global Supply Chain

Connect with us!

Connect with us on social media or email us directly with any questions.



EMAIL US

